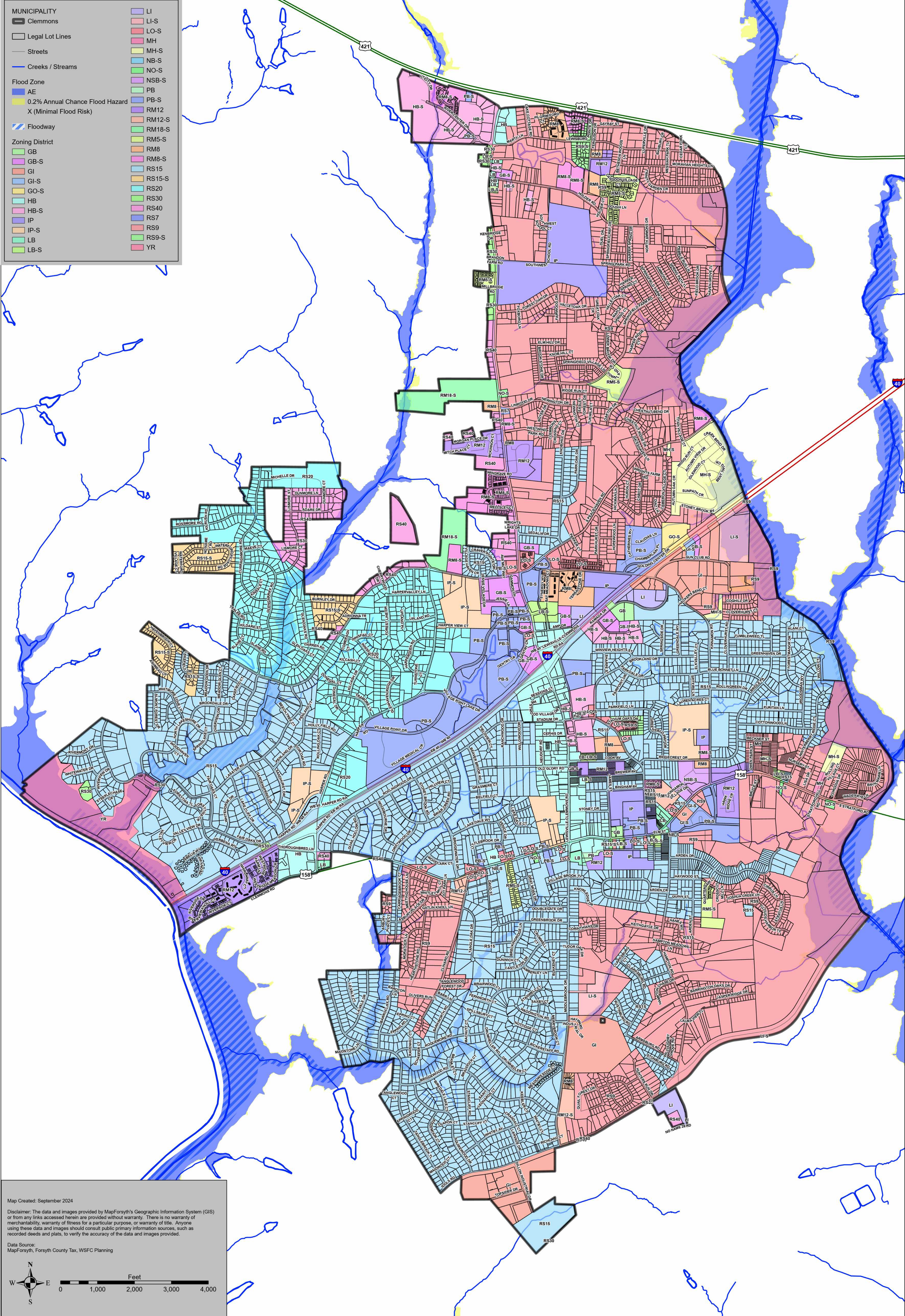


- MUNICIPALITY**
- Clemmons
- Legal Lot Lines**
- Streets**
- Creeks / Streams**
- Flood Zone**
- AE
 - 0.2% Annual Chance Flood Hazard X (Minimal Flood Risk)
 - Floodway
- Zoning District**
- LI
 - LI-S
 - LO-S
 - MH
 - MH-S
 - NB-S
 - NO-S
 - NSB-S
 - PB
 - PB-S
 - RM12
 - RM12-S
 - RM18-S
 - RM5-S
 - RM8
 - RM8-S
 - RS15
 - RS15-S
 - RS20
 - RS30
 - RS40
 - RS7
 - RS9
 - RS9-S
 - YR



Map Created: September 2024

Disclaimer: The data and images provided by MapForsyth's Geographic Information System (GIS) or from any links accessed herein are provided without warranty. There is no warranty of merchantability, warranty of fitness for a particular purpose, or warranty of title. Anyone using these data and images should consult public primary information sources, such as recorded deeds and plats, to verify the accuracy of the data and images provided.

Data Source: MapForsyth, Forsyth County Tax, WSFC Planning

0 1,000 2,000 3,000 4,000 Feet

Village of Clemmons Zoning Map

